



Product Service

CERTIFICATE

No. B 18 03 13461 382

Holder of Certificate: **Panasonic Corporation Electromechanical
Control Business Division**

1048 Kadoma, Kadoma-Shi
Osaka 571-8686
JAPAN

**Production
Facility(ies):
Certification Mark:**



Product: Relay, all-or-nothing
All-or-nothing Electrical Relay

Model(s): SFS Relay series
(See Attachment for Nomenclature)

Parameters:

Rated coil voltage:	5Vdc, 6Vdc, 9Vdc, 12Vdc, 16Vdc, 18Vdc, 21Vdc, 24Vdc, 36Vdc, 48Vdc, 60Vdc, 110Vdc, 220Vdc
Contacts:	6A 250Vac (cosØ = 1,0) 6A 30Vdc (0ms) AC-15: 240Vac 2A (cosØ = 0,3) DC-13: 24Vdc 1A (L/R=48ms)
Electrical Endurance:	100000
Mechanical Endurance:	10000000
Remarks:	1. When installing / inserting the equipment, all requirements of the mentioned test standards must be fulfilled. 2. Product type with forcibly guided (linked) contacts.

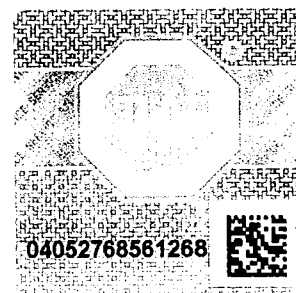
Tested according to: EN 61810-1:2015
EN 61810-3:2015

The product was tested on a voluntary basis and complies with the essential requirements. The certification mark shown above can be affixed on the product. It is not permitted to alter the certification mark in any way. In addition the certification holder must not transfer the certificate to third parties. See also notes overleaf.

Test report no.: 73508262-09
Valid until: 2023-03-19

Date, 2018-03-29
Page 1 of 2

(Yoshio Sato)



Certificate Attachment
Certificate No.



Product Service

B 18 03 13461 382

Nomenclature:

<u>SFS</u>	<u>4</u>	-	<u>L</u>	-	<u>DC24V</u>	-	<u>D</u>	-	<u>XXX</u>
I	II		III		IV		V		VI

I: Series designation

SFS: SF relay slim type

II: Contact configuration

2: 2a2b type 3: 3a1b type 4: 4a2b type

5: 5a1b type 6: 3a3b type

III: Type

Blank: Standard (without LED)

L: with LED

S: RT III (SFS2 and SFS3 only)

IV: Coil voltage

(RT II Type)

DC 5, 6, 9, 12, 16, 18, 21, 24, 36, 48, 60, 110, 220V

(RT III Type)

DC 12, 18, 21, 24, 48V

V: Diode

Blank: Standard (without Diode)

D: with Diode (coil voltage: DC5 - DC110V)

VI: Customer Management Number

XXX: Blank or any alphanumeric character

CERTIFICATE OF COMPLIANCE

Certificate Number 20160902-E43149
Report Reference E43149-20050526
Issue Date 2016-SEPTEMBER-02

Issued to: PANASONIC CORPORATION
ISE FACTORY, TAMIYAJI, TAMAKI-CHO
WATARAI-GUN, MIE-KEN 519-0492 JAPAN


This is to certify that COMPONENT - SWITCHES, INDUSTRIAL CONTROL
representative samples of See Addendum Page for Models

Have been investigated by UL in accordance with the
Standard(s) indicated on this Certificate.

Standard(s) for Safety: UL 508, Industrial Control Equipment
CSA C22.2 No. 14-13, Industrial control equipment

Additional Information: See the UL Online Certifications Directory at
www.ul.com/database for additional information

Only those products bearing the UL Certification Mark should be considered as being covered by UL's
Certification and Follow-Up Service.

The UL Recognized Component Mark generally consists of the manufacturer's identification and catalog
number, model number or other product designation as specified under "Marking" for the particular
Recognition as published in the appropriate UL Directory. As a supplementary means of identifying products
that have been produced under UL's Component Recognition Program, UL's Recognized Component Mark:
 may be used in conjunction with the required Recognized Marks. The Recognized Component Mark is
required when specified in the UL Directory preceding the recognitions or under "Markings" for the individual
recognitions.

Recognized components are incomplete in certain constructional features or restricted in performance
capabilities and are intended for use as components of complete equipment submitted for investigation rather
than for direct separate installation in the field. The final acceptance of the component is dependent upon its
installation and use in complete equipment submitted to UL LLC.

Look for the UL Certification Mark on the product.



Bruce Mahrenholz, Director North American Certification Program

UL LLC

Any information and documentation involving UL Mark services are provided on behalf of UL LLC (UL) or any authorized licensee of UL. For questions, please
contact a local UL Customer Service Representative at <http://ul.com/aboutul/locations/>

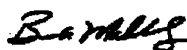


CERTIFICATE OF COMPLIANCE

Certificate Number 20160902-E43149
Report Reference E43149-20050526
Issue Date 2016-SEPTEMBER-02

This is to certify that representative samples of the product as specified on this certificate were tested according to the current UL requirements.

Component – Industrial Control Switches, Model SFS followed by 2, 3, 4, 5 or 6, followed by L, S or blank, followed by – DC05V, DC06V, DC09V, DC12V, DC16V, DC18V, DC21V, DC24V, DC36V, DC48V, DC60V, DC110V or DC220V; followed by D or blank, may be followed by additional numbers and/or letters.



Bruce Mahrenholz, Director North American Certification Program

UL LLC

Any information and documentation involving UL Mark services are provided on behalf of UL LLC (UL) or any authorized licensee of UL. For questions, please contact a local UL Customer Service Representative at <http://ul.com/aboutul/locations/>

